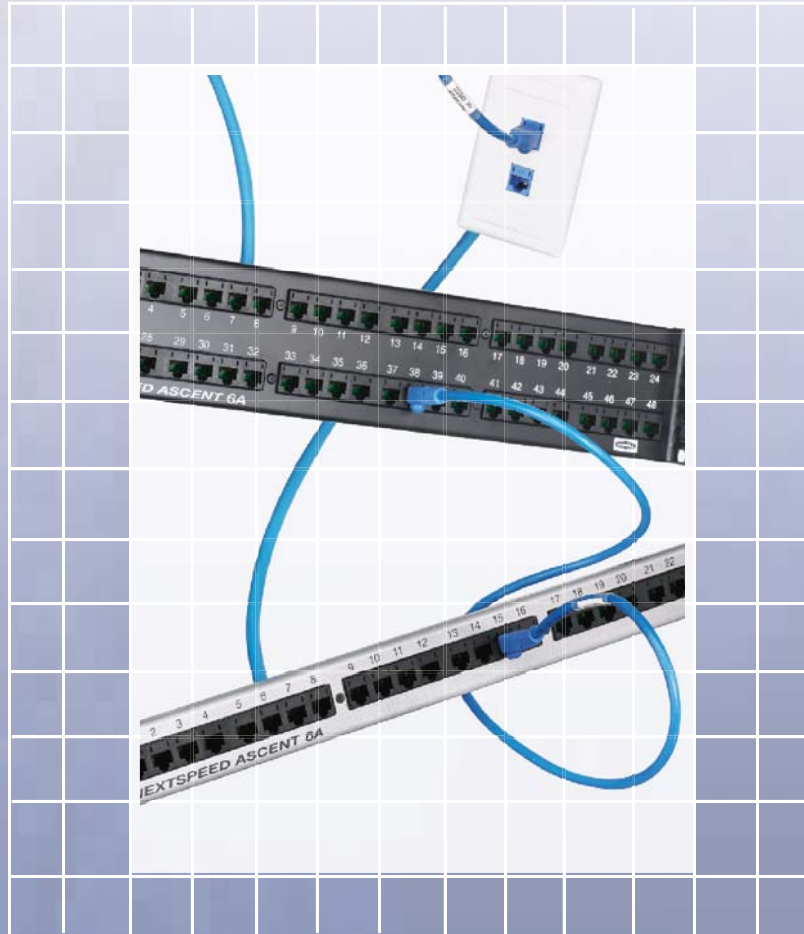


# Delivering Category 6A With Seamless Integration

publication

technology



Hubbell Premise Wiring

# It's all about Real Time Content Delivery!

Today's complex IT environment is about empowering your entire enterprise through increased productivity, improved customer response and reduced cost of ownership. It's about leveraging new technologies for a competitive advantage, being more agile while preparing for whatever comes next.



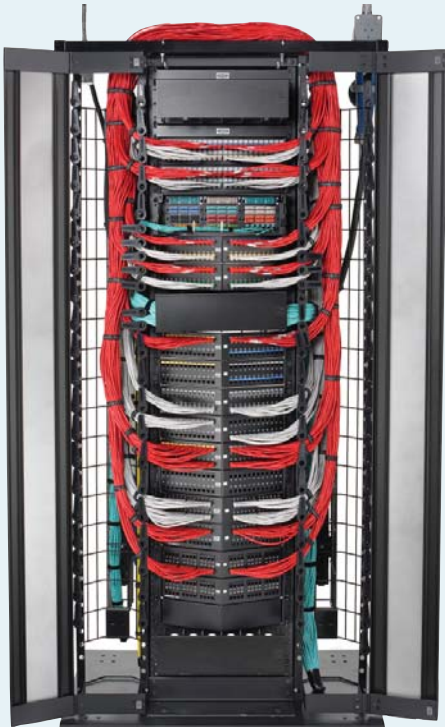
**Bandwidth Intensive**  
*Content delivery in real time*

**Energy Efficiency**  
*Heat Reduction*

**LEED Building Design**  
*Reduces carbon footprint*

Comprehensive integrated infrastructure solutions...  
Hubbell One is a comprehensive infrastructure solution delivered by a single vendor with one objective – evolving your network to empower your enterprise.

## Category 6A Integrated Cable Management System



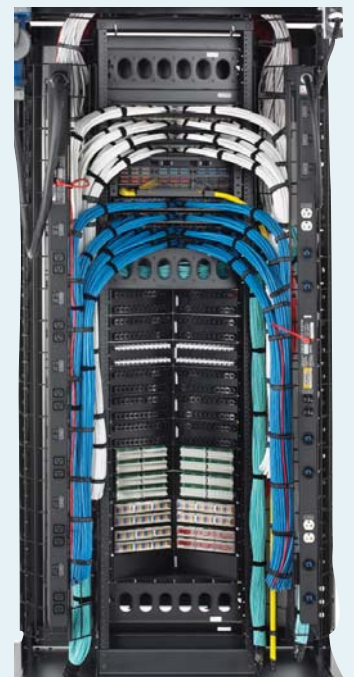
Increased port count necessitates a controlled cable management system to address the routing, management and administration of patch cords.



Category 6A Increased cable O.D. demands more room and provides support behind the rack to tie off and manage the abundance of horizontal cable being installed.



The steel wire frame provides the rugged support needed to manage the increased cable count and weight and provides airflow helping with heat dissipation.



Whether your vision is small and clear cut or large and complex, Hubbell pride themselves on being that trusted advisor who understands your challenges and responds with system solutions that maximize the impact of emerging technologies while preparing you for technologies to come. Hubbell works one-on-one with you to create and maintain a long term business relationship.



### High performance connectivity...

HubbellOne gives you true choice without compromising performance. That's why all Hubbell systems are standards component based and provide an option of open architecture.

Hubbell systems are designed and developed to maximize cabling system performance without sacrificing reliability. All components are third-party verified and backed by our 25-year **MISSION CRITICAL®** warranty. Hubbell stands behind both products and applications, even emerging technologies, because Hubbell understand that cabling infrastructure performance can impact the success of your enterprise.

### High Density Solutions Needed

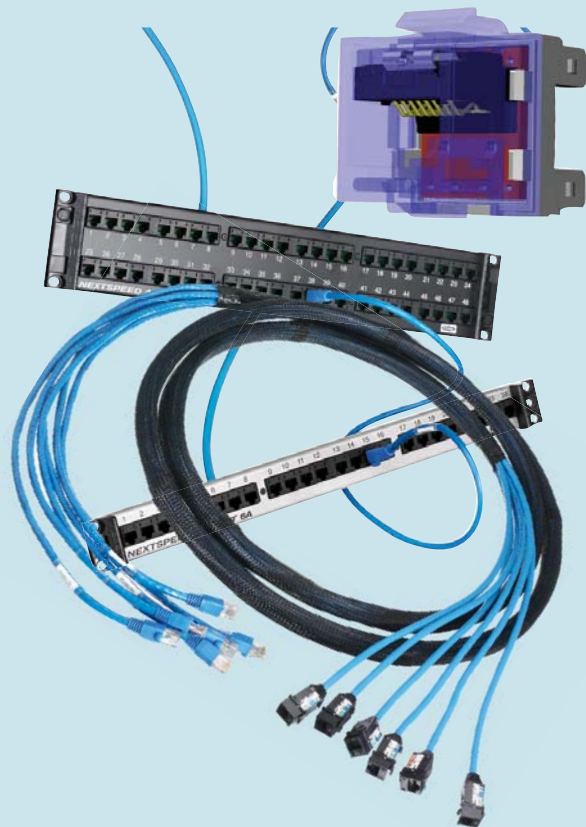
Ideal solutions for data centers, ISP (Internet Service Providers), content delivery providers and other applications where space is at an absolute premium.

The angle of the panel eliminates the need for additional horizontal cable management, allowing for more connections within single rack unit.



### Hubbell Systems Work Seamlessly Together

This dynamic versatility maximizes the value of your cabling infrastructure in ways that standalone connectivity, delivery, and management systems simply cannot.



### Category 6A BIDnet™ Pre-terminated Copper Assemblies

The ideal solution for data centers and applications where accuracy, reliability and performance are the most important factors.

**How can you evolve your network to empower your entire enterprise?  
The answer is Hubbell One,  
a comprehensive set of solution designed and integrated to work together seamlessly.**

## NEXTSPEED® Ascent Category 6A Jacks

The NEXTSPEED® Ascent Category 6A jack exceeds TIA and ISO Category 6A component specifications, delivering extended bandwidth and reliability for all LAN, multimedia and Power over Ethernet applications.

Delivery: 1 per Bag/Carton of 25. 25 per Bag/Carton of 1

Catalog No. **HJ6AXX** ✓10G ✓6A Catalog No. **HJ6AXX25** ✓10G ✓6A



**XX** = See Jack Color Options below.

AL=Almond	BK=Black	B=Blue	EI=Electric Ivory	GL=Gold	GY=Gray	GN=Green	LA=Light Almond
OW=Office White	OR=Orange	P=Purple	R=Red	TI=Telco Ivory	W=White	Y=Yellow	

## NEXTSPEED® Ascent, Category 6A, Component Patch Panels

The NEXTSPEED® Ascent Category 6A Panels are third party verified for TIA and ISO Category 6A component specifications and are the perfect solution for the datacenter delivering extended bandwidth and reliability for all IEEE Ethernet applications.

Format Width Color Catalog No.

Standard	19" (483)	Black	<b>HP6AXXU</b>	✓10G	✓6A
Standard	19" (483)	Silver	<b>HP6AXXUS</b>	✓10G	✓6A
Angled	19" (483)	Black	<b>HP6AXXAU</b>	✓10G	✓6A

Replace "XX" with port size: "24" = 24 ports; "48" = 48 ports



## NEXTSPEED® Ascent Category 6A Patch Cords

Color: Gray

Catalog No. **HC6AxxYY** ✓10G ✓6A

**xx** = Standard Color:

"B" = Blue; "GY" = Gray For other colors replace color designation with one of the following:

OR = Orange, R = Red, GN = Green, P = Purple, W = White

**YY** = Standard Length:

"01" = 3'; "03" = 3'; "05" = 5'; "07" = 7'; "10" = 10'; "15" = 15'; "20" = 20'.

MTO lengths: 25', 30', 35', 40', 45', 50', 55', 60', 75', and 100'.



## NEXTSPEED® Ascent Category 6A Cable

Color	Catalog No.	Riser Spool (1000' length)	Catalog No.	Plenum Spool (1000' length)
Blue	<b>C6ASRB</b>	✓10G ✓6A	<b>C6ASPB</b>	✓10G ✓6A
Gray	<b>C6ASRGY</b>	✓10G ✓6A	<b>C6ASPGY</b>	✓10G ✓6A
White	<b>C6ASRW</b>	✓10G ✓6A	<b>C6ASPW</b>	✓10G ✓6A
Yellow	<b>C6ASRY</b>	✓10G ✓6A	<b>C6ASPY</b>	✓10G ✓6A



## NEXTSPEED® Ascent Category 6A Trunk Cable Assemblies

BIDnet™ Pre-Terminated Cable Assemblies are Make-to-Order items. Please call our Inside Sales Team for lead-time and availability.

✓10G  
✓6A

- 100% tested.
- High performing factory terminations eliminate installation labor and preparation.
- Balanced, pre-terminated cable assemblies provide improved channel performance.

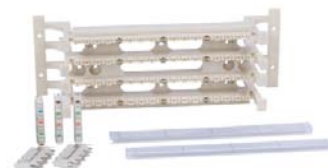


## NEXTSPEED® Ascent Category 6A Field Termination Kits

Description*	Catalog No.	✓10G	✓6A
64-Pair Kit with legs and 16 connecting blocks*	<b>6110FTK64WL</b>	✓10G	✓6A
64-Pair Kit w/o legs and 16 connecting blocks*	<b>6110FTK64NL</b>	✓10G	✓6A
192-Pair Kit with legs and 64 connecting blocks*	<b>6110FTK192WL</b>	✓10G	✓6A

\* 6-110, 4-pair connecting blocks.

See page E14 for more information.



**HUBBELL®**  
Premise Wiring

[www.hubbell-premise.com](http://www.hubbell-premise.com)



Hubbell Premise Wiring • Hubbell Incorporated (Delaware) • 14 Lord's Hill Road • Stonington, CT 06378 • Phone (800) 626-0005 • FAX (860) 535-8328

Printed in U.S.A. Specifications subject to change without notice.

\* is a registered trademarks of Hubbell Incorporated.

Publication 2010-3